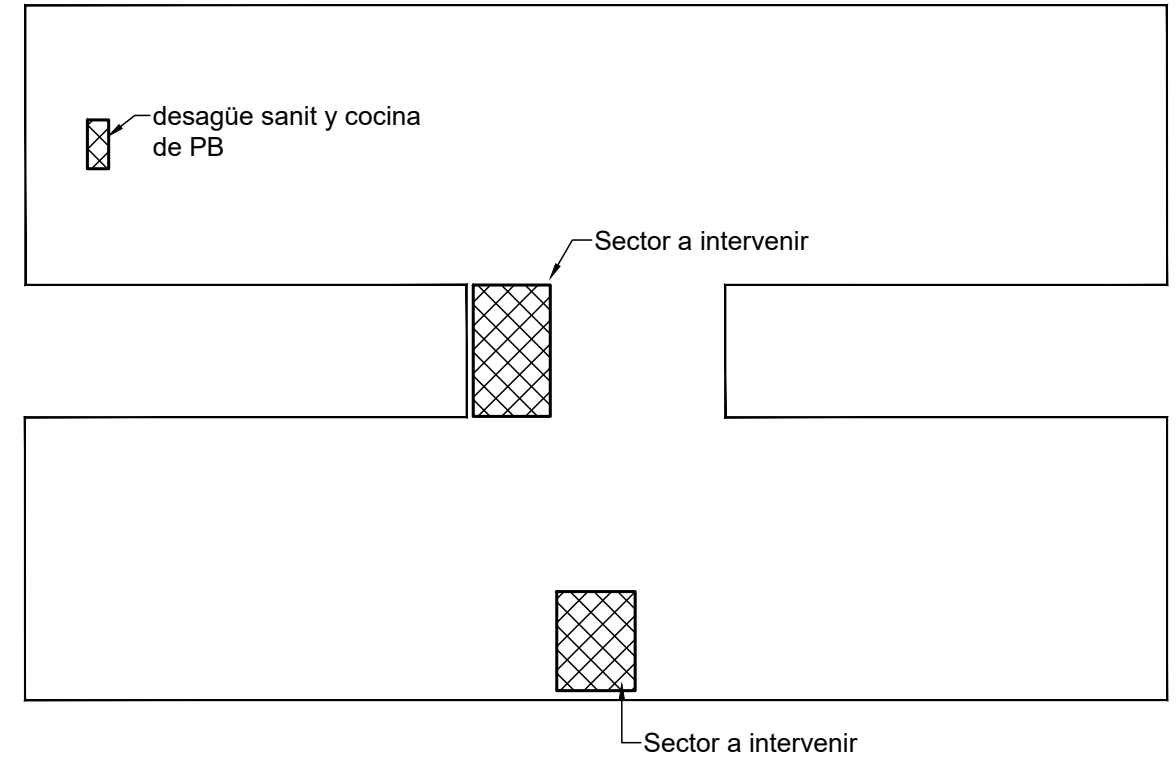
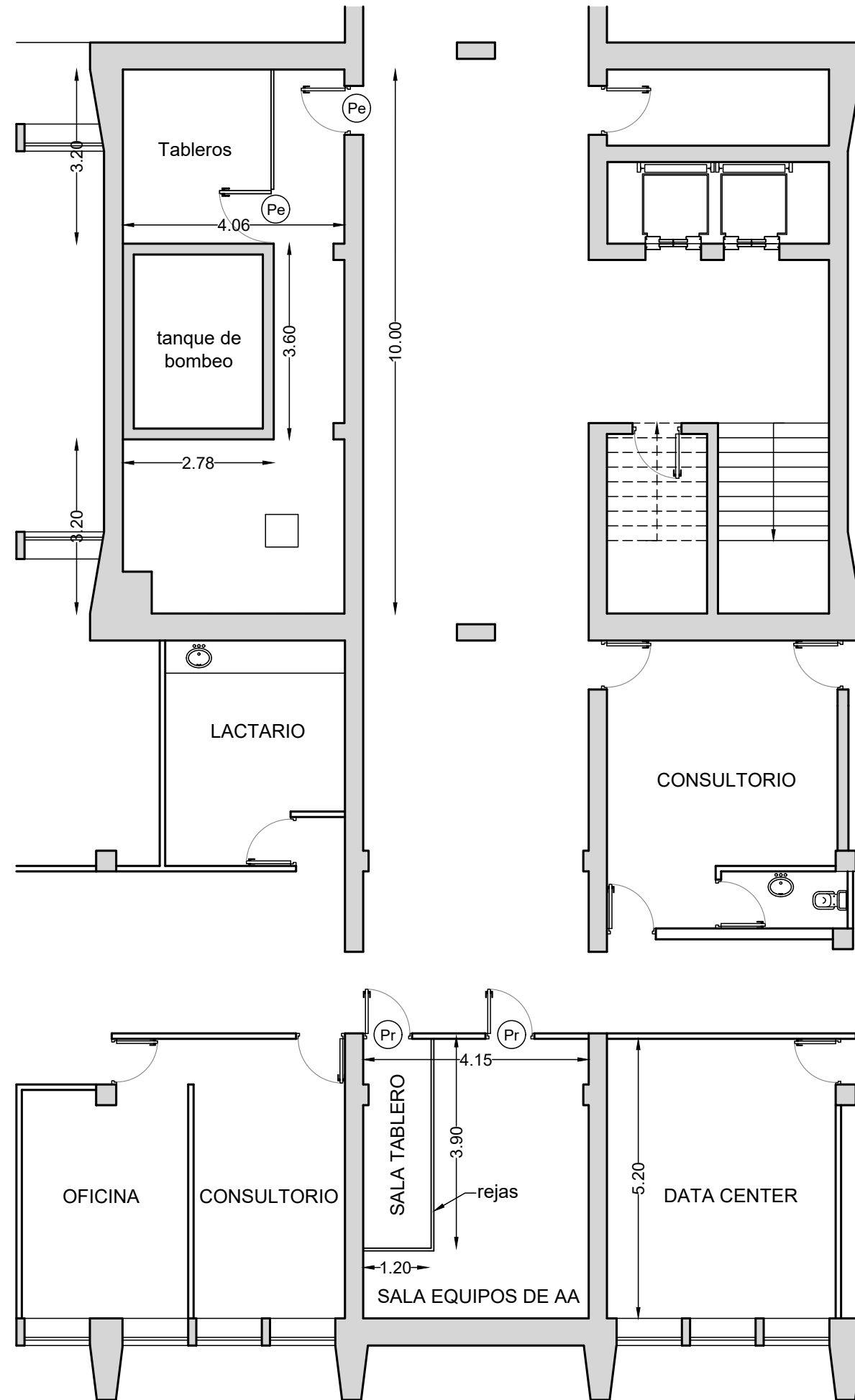

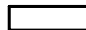
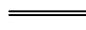
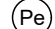




PLANTA SUBSUELO



ESQUEMA SUBSUELO

REFERENCIAS

-  Estructura y muros existentes
-  Tabiques existentes
-  Rejas
-  Puertas existentes
-  Puertas existentes a reemplazar

PODER JUDICIAL DE SAN JUAN DEPARTAMENTO DE SERVICIOS GENERALES		PLANO N°3
PROYECTO: Remodelación en Edificio 25 de Mayo (Planta Baja y Subsuelo)		
PLANO: General Subsuelo (Situación Existente)	Revisión N° 01	ESC. 1:100
	03/10/2023	