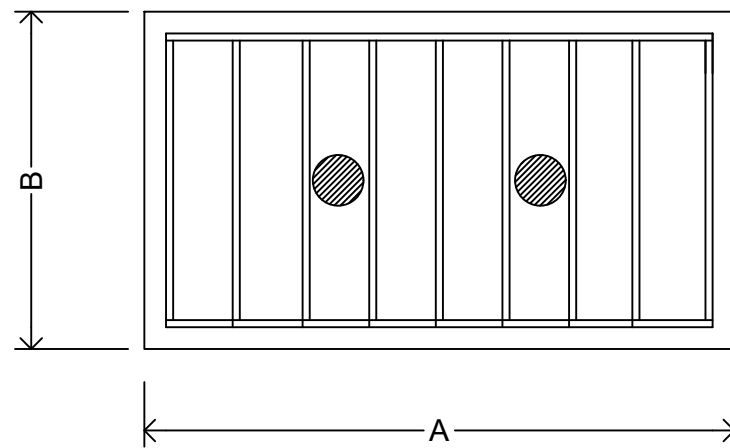
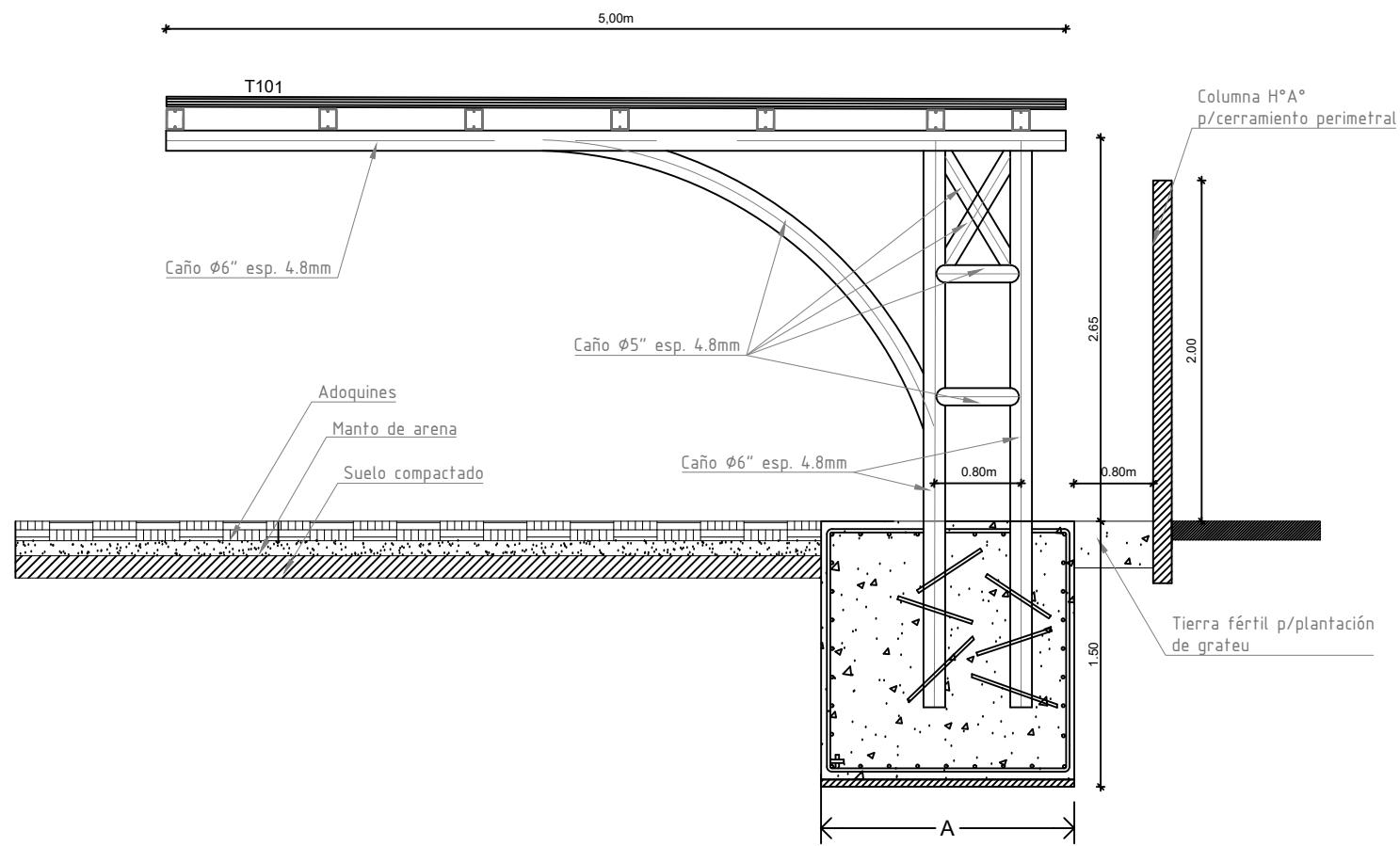


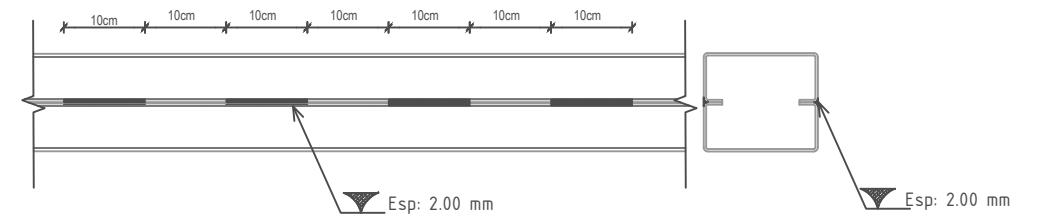
Detalle de Estructura Metálica cocheras

ESTRUCTURA VMI-CI

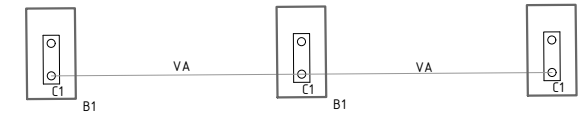


Hormigón: H17 - $\beta_r = 140 \text{ Kg/cm}^2$ Acero: ADN 420 - $\beta_s = 4200 \text{ Kg/cm}^2$

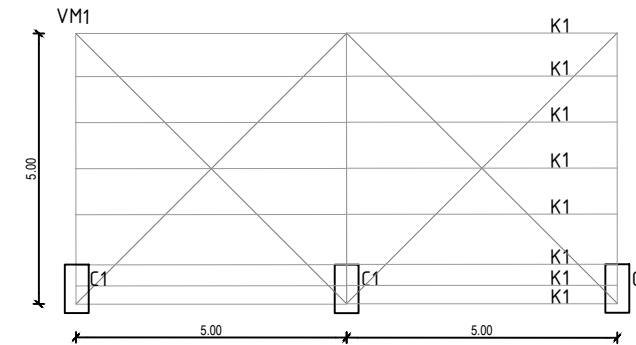
DETALLE TÍPICO SOLDADURA PERFILES C



ESTRUCTURA FUNDACIÓN

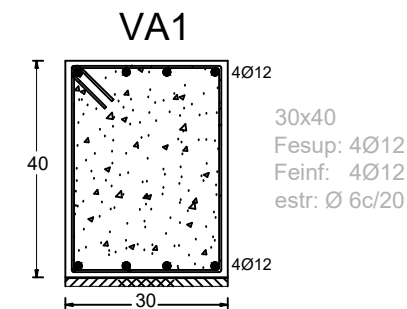


ESTRUCTURA TECHO

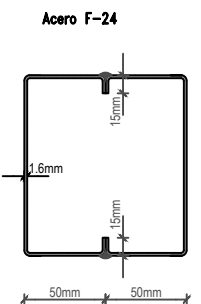


VIGAS DE ARRIOSTRAMIENTO

ADN 420 - $\beta_s = 4200 \text{ Kg/cm}^2$



CORREA KI



Base	Nv	Dimensiones			Tensión	Trapecio 1		Trapecio 2		Forma	Observaciones
	ton	A	B	H	kg/cm ²	φ	sep	φ	sep		
	4,10	120	80	150	0,43	6	20	6	20	Centrada	Unificada para 2 columnas metálicas

PODER JUDICIAL DE SAN JUAN DEPARTAMENTO DE SERVICIOS GENERALES		PLANO N°10
PROYECTO: JUZGADO DE PAZ DE SAN MARTIN		
PLANO: DETALLE DE CUBIERTA COCHERAS	Rev. 00	
	12/09/2022	ESC. variable