








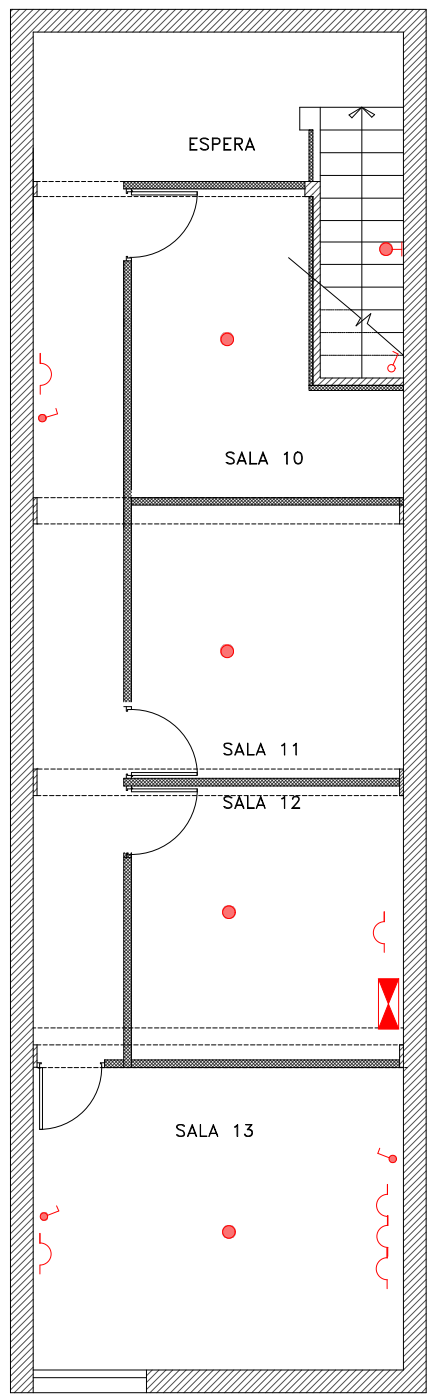
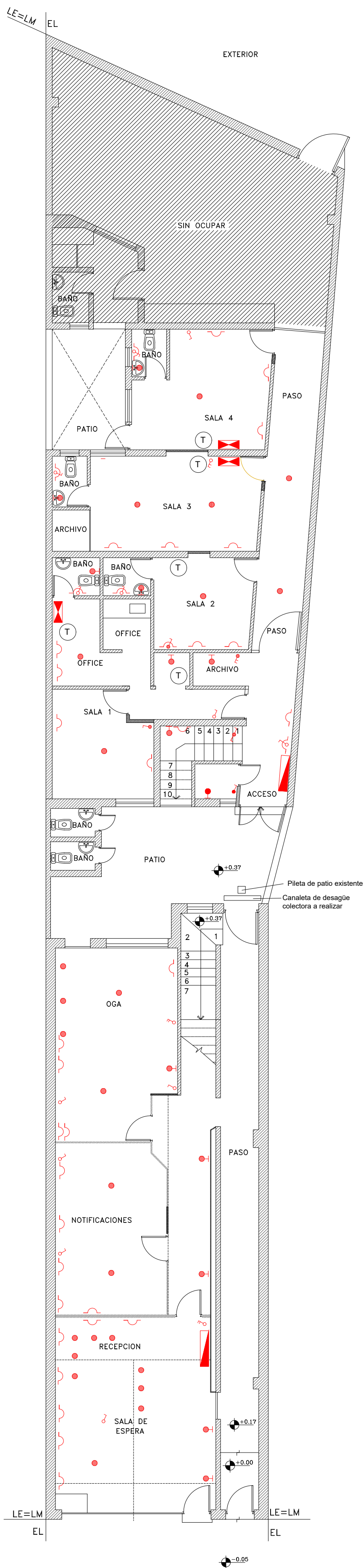


REFERENCIAS

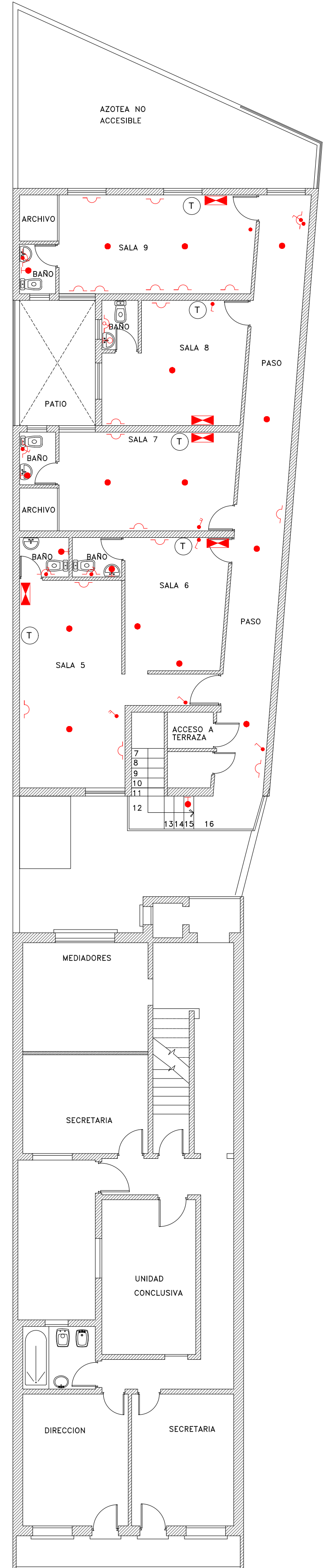
-  Llave combinada
-  Llave de 1 punto
-  Toma corriente uso General (TUG)
-  Boca de techo
-  Aplique
-  Tablero General (TG)
-  Tablero Seccional (TS)
-  Teléfono
-  Luz de emergencia



SUBSUELO



PLANTA BAJA



PLANTA ALTA

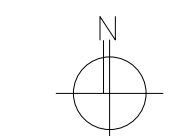
PODER JUDICIAL DE SAN JUAN
DIRECCION SERVICIOS GENERALES

PLANO
PLA -06

Proyecto: Centro Judicial Mediación

Plano: Instalación Eléctrica existente

Revisión N° 01
21/6/2022



esc: 1: 100